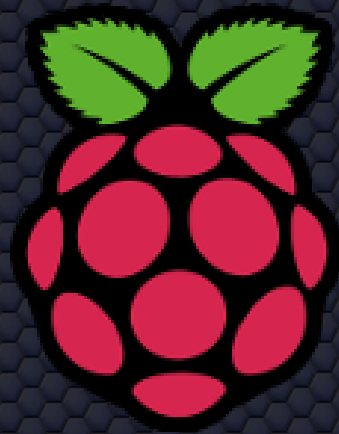


Raspberry Pi



Zur Person



Nico Maas

IT Systemelektroniker (Uni RZ SB)

4. Semester Praktische Informatik (HTW SB)

mail@nico-maas.de

<http://www.nico-maas.de>

<http://www.jctixx.de>

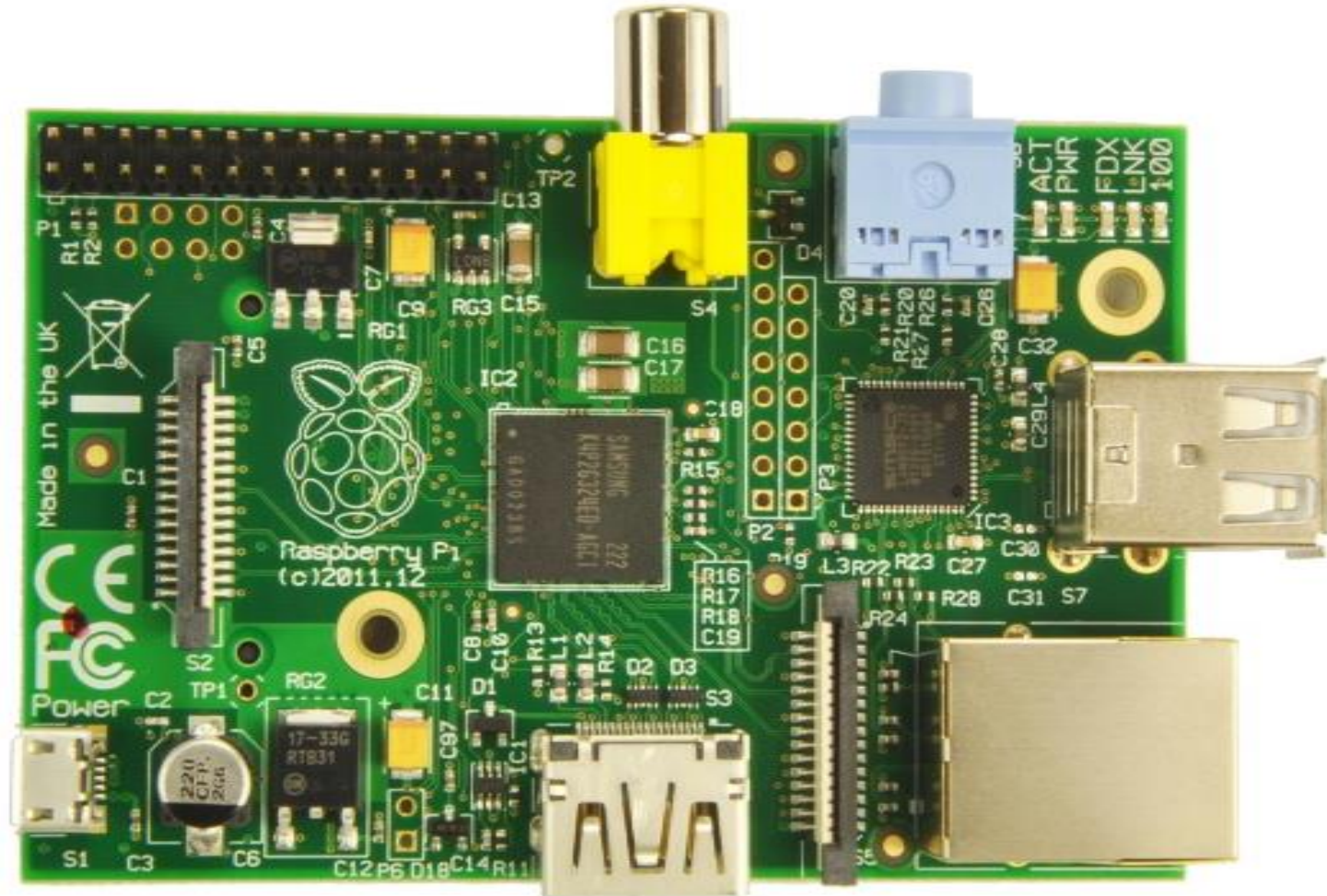
Twitter: @nmaas87

Übersicht



- Raspberry Pi
- Specs
- Modell China / Modell A
- Betriebssysteme?
- Zubehör
- Anwendungen für den Pi?
- Pi Live?
- Fragen und Antworten

Raspberry Pi



Specs



■ Modell B 2.0:

- 700 MHz ARM
- 512 MB RAM
- 2 x USB
- 1 x Fast Ethernet
- HDMI, Video Cinch
- 3,5 mm Audio Klinke
- Micro USB Power
- SD Card
- 40€

■ Modell A:

- 256 MB RAM
- 1 x USB
- 0 x Fast Ethernet
- 27,50€

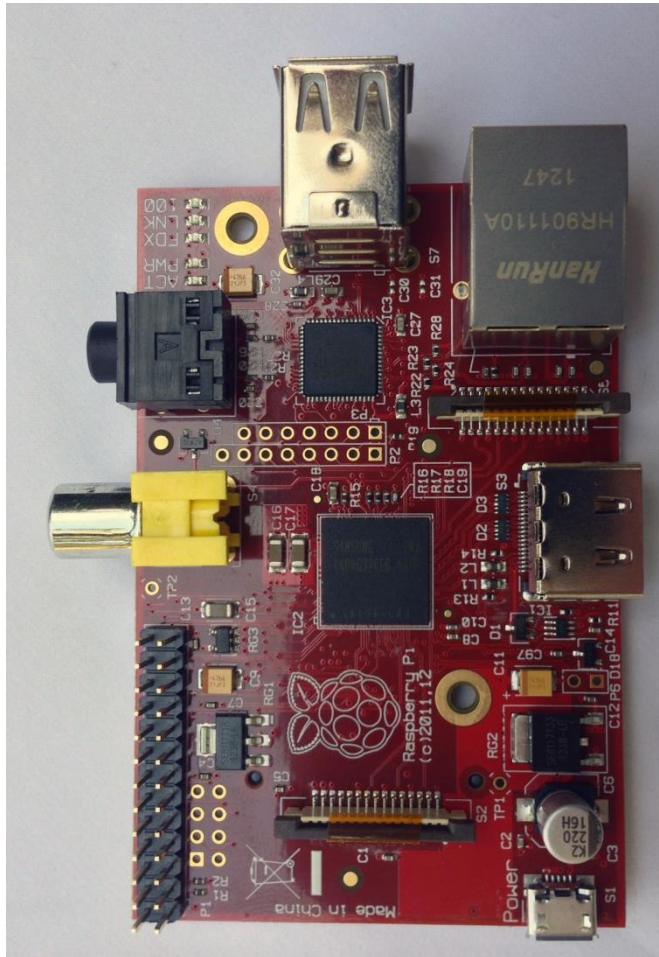
■ Modell B 2.0 Red:

- China only

■ Modell B pre 2.0:

- 256 MB RAM
- (nicht mehr im Verkauf)

Modell Red / Modell A



Betriebssysteme?



- Linux basiert!

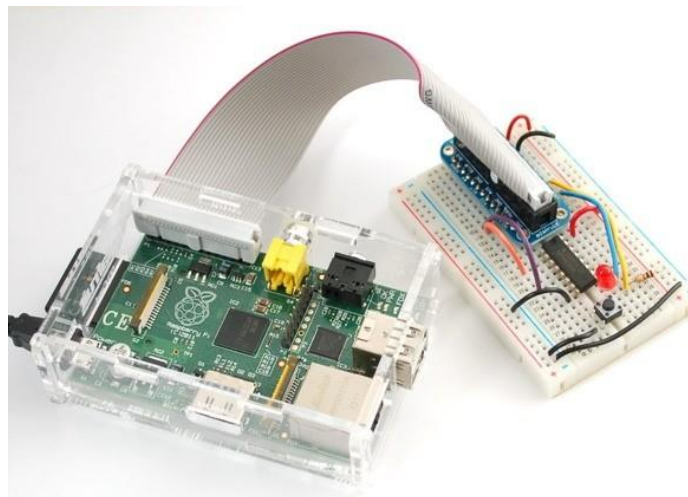
Raspbian (Debian) / Arch Linux / RISC OS / Android

A screenshot of a Raspberry Pi desktop environment. The desktop background is a dark blue pattern with a large, stylized green and red raspberry logo. Several application icons are visible: LXTerminal, WIFI Config, IDLE 3, and Scratch. Two terminal windows are open. The top terminal window shows the output of the 'netstat' command, displaying network statistics for the wlan0 interface. The bottom terminal window shows the output of the 'tcpdump' command, displaying a list of ICMP echo requests (ping) from 192.168.1.1 to the Raspberry Pi, along with their respective TTL and time values.

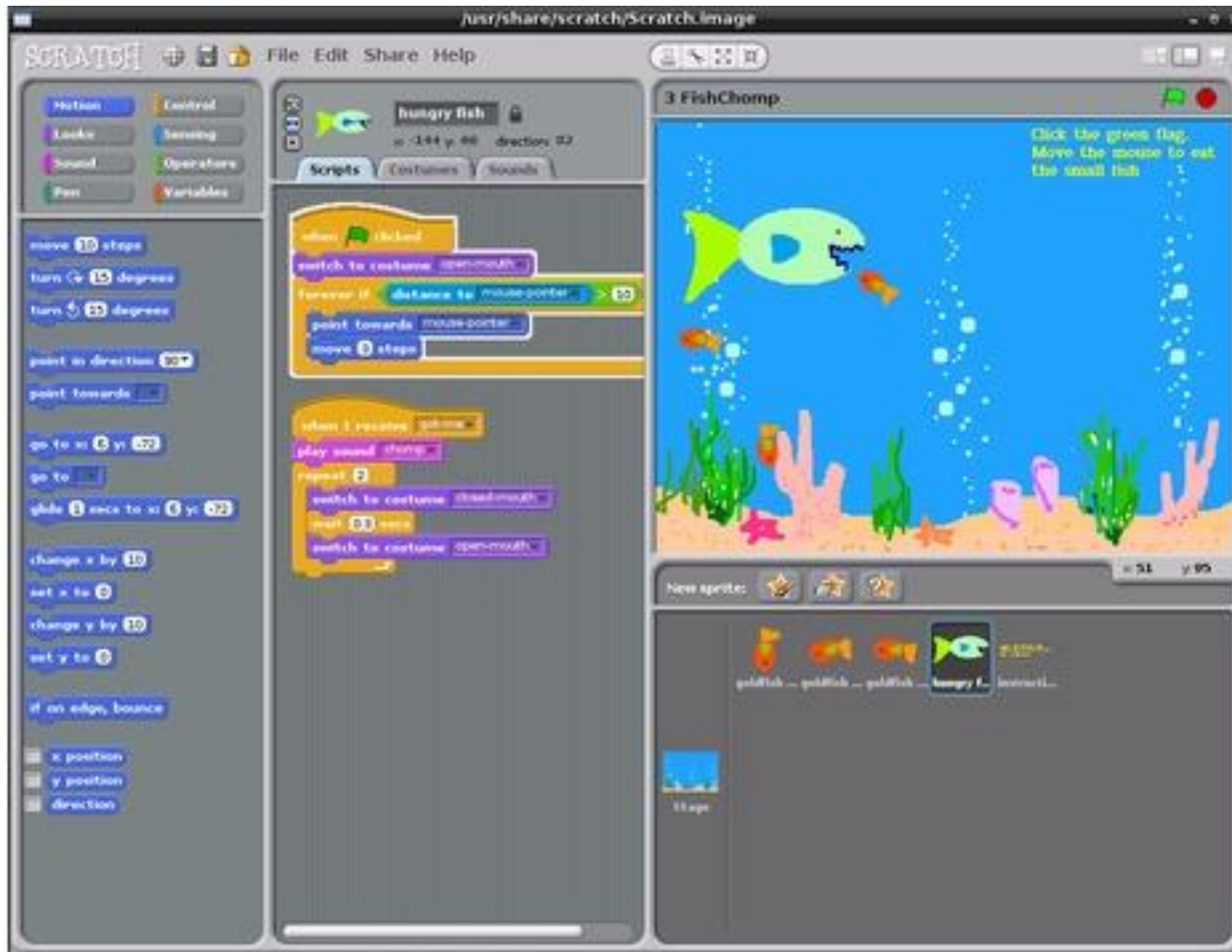
PID	USER	PROGRAM	DEV	SENT	RECEIVED
2190	pi	x11vnc	wlan0	19.789	0.601 KB/sec
?	root	unknown TCP		0.000	0.000 KB/sec
TOTAL				19.789	0.601 KB/sec

```
64 bytes from 192.168.1.1: icmp_req=1664 ttl=64 time=1.77 ms
64 bytes from 192.168.1.1: icmp_req=1665 ttl=64 time=1.65 ms
64 bytes from 192.168.1.1: icmp_req=1666 ttl=64 time=1.64 ms
64 bytes from 192.168.1.1: icmp_req=1667 ttl=64 time=1.71 ms
64 bytes from 192.168.1.1: icmp_req=1668 ttl=64 time=1.64 ms
64 bytes from 192.168.1.1: icmp_req=1669 ttl=64 time=1.65 ms
64 bytes from 192.168.1.1: icmp_req=1670 ttl=64 time=1.62 ms
64 bytes from 192.168.1.1: icmp_req=1671 ttl=64 time=1.56 ms
64 bytes from 192.168.1.1: icmp_req=1672 ttl=64 time=1.61 ms
64 bytes from 192.168.1.1: icmp_req=1673 ttl=64 time=1.61 ms
64 bytes from 192.168.1.1: icmp_req=1674 ttl=64 time=1.62 ms
64 bytes from 192.168.1.1: icmp_req=1675 ttl=64 time=1.69 ms
64 bytes from 192.168.1.1: icmp_req=1676 ttl=64 time=1.58 ms
64 bytes from 192.168.1.1: icmp_req=1677 ttl=64 time=1.65 ms
64 bytes from 192.168.1.1: icmp_req=1678 ttl=64 time=1.74 ms
64 bytes from 192.168.1.1: icmp_req=1679 ttl=64 time=1.66 ms
64 bytes from 192.168.1.1: icmp_req=1680 ttl=64 time=1.65 ms
64 bytes from 192.168.1.1: icmp_req=1681 ttl=64 time=1.73 ms
64 bytes from 192.168.1.1: icmp_req=1682 ttl=64 time=1.63 ms
64 bytes from 192.168.1.1: icmp_req=1683 ttl=64 time=1.75 ms
64 bytes from 192.168.1.1: icmp_req=1684 ttl=64 time=1.74 ms
64 bytes from 192.168.1.1: icmp_req=1685 ttl=64 time=1.63 ms
64 bytes from 192.168.1.1: icmp_req=1686 ttl=64 time=1.89 ms
```

Zubehör?



Programmieren lernen



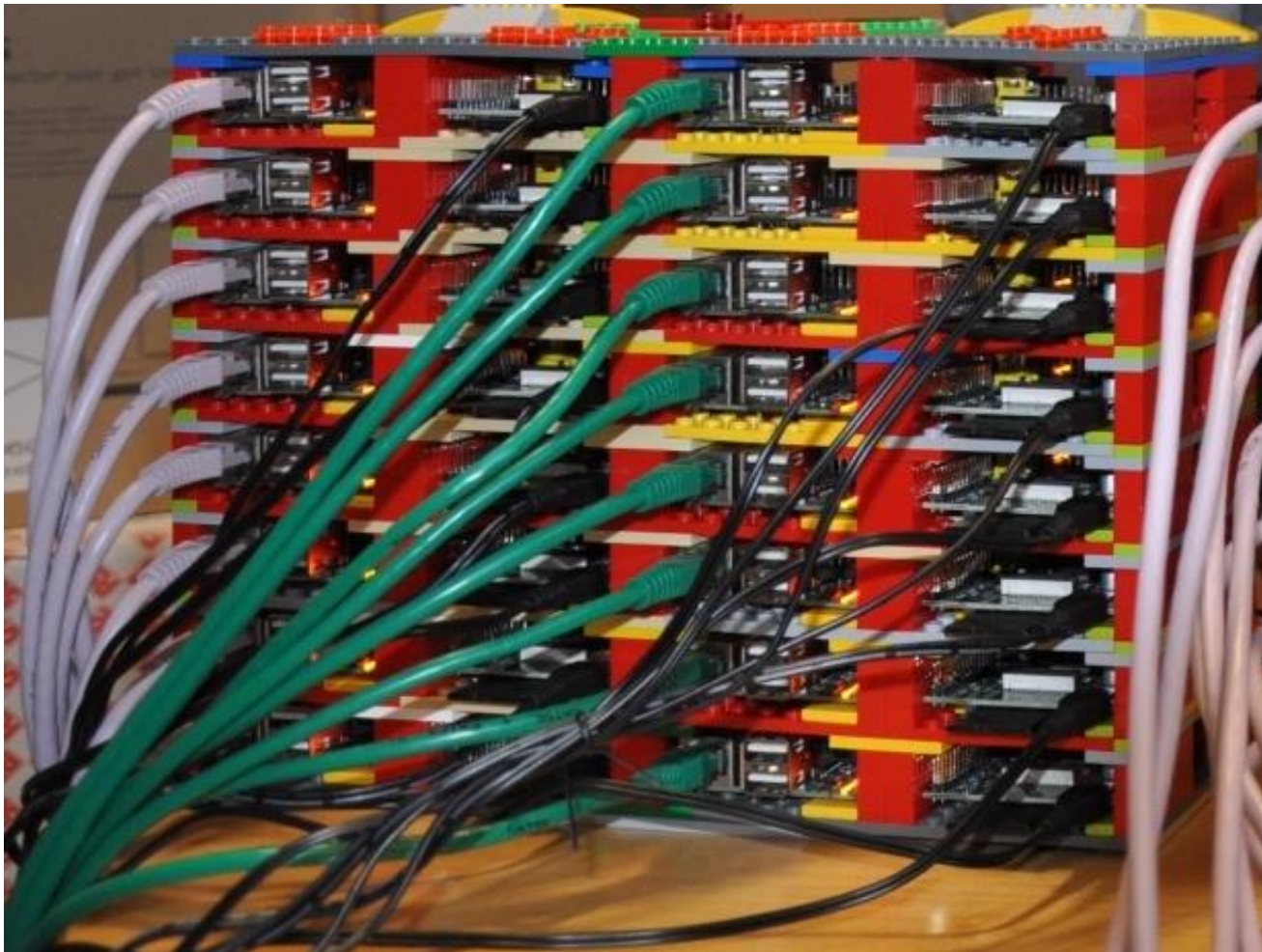
Videoplayer



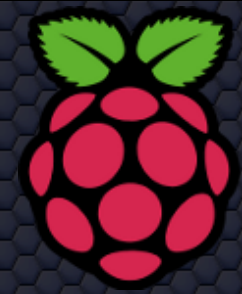
Spielekonsole



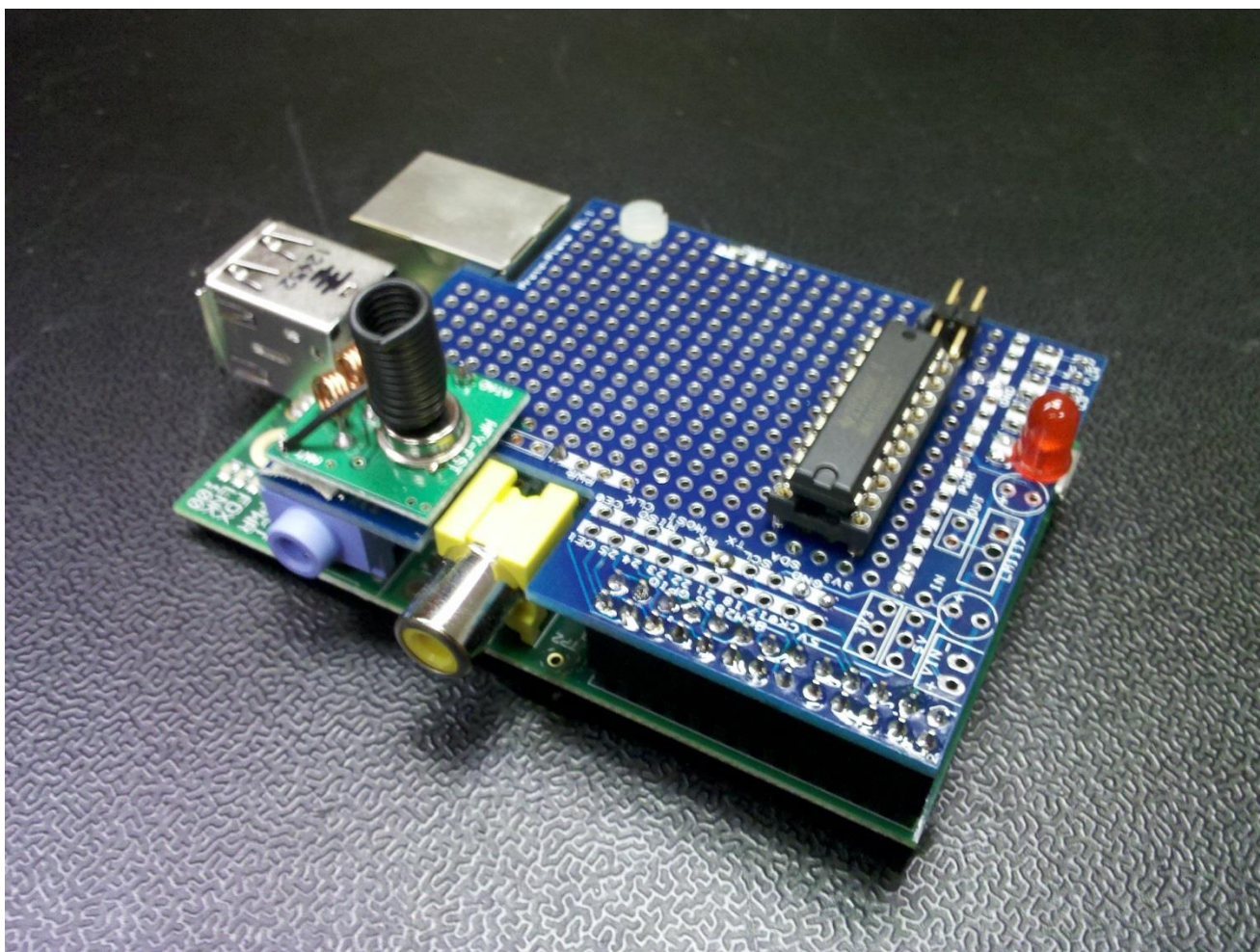
Supercluster



Ozean Kamera



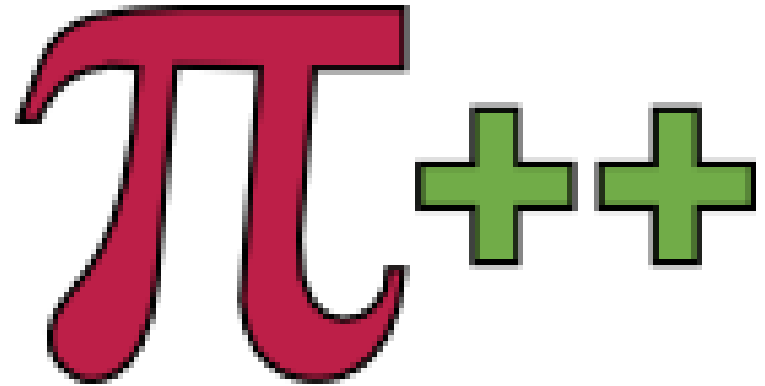
Fernsteuerung



Pi Live?



- Pi and More #3
 - Universität Trier
 - Freies Treffen
 - Samstag, 15.06.
 - <http://www.piandmore.de/>



**Vielen Dank für Ihre
Aufmerksamkeit**

Nico Maas
mail@nico-maas.de
<http://www.jctixx.de>
<http://www.nico-maas.de>